

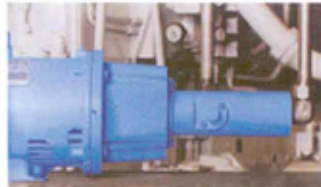


WESTERN ENERGY TECHNOLOGY PTE LTD

## Imo Pump



ALLHEAT® series pump in heat transfer fluid service - Germany



3G series pump in compressor tube service - Buffalo, NY, USA



CIG series pumps in hydraulic service - Detroit, Michigan, USA



8L and 12D series pumps in crude oil service - Alberta, Canada

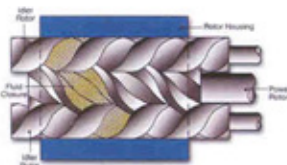


6D series pumps in crude oil service - Pacific Rim

### Imo Rotary & Centrifugal Pumps Quick Selection Guide

PUMP SERIES	PROCESS/TRANSFER	FUEL	LUBE	SEAL	FLUID POWER	HIGH PRESSURE	MACHINE TOOL/COOLANT	CONDENSATE/WATER	HOT WATER	PUMP TYPE	APPROXIMATE FLOW RANGE		MAXIMUM DISCHARGE PRESSURE	
											(USGPM)	(L/MIN)	(PSIG)	(BAR-G)
3E	*	*	*	*	*	*	*	*	*	Three Spline	1-100	4-379	150	10
UCF	*	*	*	*	*	*	*	*	*	Three Spline	120-600	454-3028	175	12
3G	*	*	*	*	*	*	*	*	*	Three Spline	1-200	7-757	250	17
3R	*	*	*	*	*	*	*	*	*	Three Spline	150-1100	568-4164	300	21
3D	*	*	*	*	*	*	*	*	*	Three Spline	5-400	19-1514	500	34
324A	*	*	*	*	*	*	*	*	*	Three Spline	50-900	189-3407	500	34
5N	*	*	*	*	*	*	*	*	*	Three Spline	300-1000	1196-3785	500	34
323F	*	*	*	*	*	*	*	*	*	Three Spline	400-3300	1514-12491	300	21
T324	*	*	*	*	*	*	*	*	*	Three Spline	300-600	1136-3028	700	48
TRITEC	*	*	*	*	*	*	*	*	*	Three Spline	10-280	38-1060	1160	80
EMTEC	*	*	*	*	*	*	*	*	*	Three Spline	4-260	15-984	1300	90
110H	*	*	*	*	*	*	*	*	*	Three Spline	2-7	8-26	1500	103
6D	*	*	*	*	*	*	*	*	*	Three Spline	5-400	19-1514	1500	103
4T	*	*	*	*	*	*	*	*	*	Three Spline	10-200	38-757	1500	103
8L	*	*	*	*	*	*	*	*	*	Three Spline	100-1100	379-4164	1500	103
210H	*	*	*	*	*	*	*	*	*	Three Spline	7-22	26-83	2000	138
4UV	*	*	*	*	*	*	*	*	*	Three Spline	10-200	38-757	1500	103
12D	*	*	*	*	*	*	*	*	*	Three Spline	5-400	19-1514	2200	152
6T	*	*	*	*	*	*	*	*	*	Three Spline	5-200	19-757	2500	172
6UV	*	*	*	*	*	*	*	*	*	Three Spline	5-200	19-757	2500	172
12E	*	*	*	*	*	*	*	*	*	Three Spline	10-100	38-379	4500	310
▶ CIG-2	*	*	*	*	*	*	*	*	*	Cast Iron Internal Gear	1-6	4-23	5000	345
▶ CIG-3	*	*	*	*	*	*	*	*	*	Cast Iron Internal Gear	4-14	15-53	5000	345
▶ CIG-4	*	*	*	*	*	*	*	*	*	Cast Iron Internal Gear	8-28	30-106	5000	345
▶ CIG-5	*	*	*	*	*	*	*	*	*	Cast Iron Internal Gear	17-56	64-212	5000	345
▶ CIG-6	*	*	*	*	*	*	*	*	*	Cast Iron Internal Gear	35-113	132-428	5000	345
▶ CIG-8	*	*	*	*	*	*	*	*	*	Cast Iron Internal Gear	73-122	276-462	5000	345
NSS	*	*	*	*	*	*	*	*	*	Cast Iron Internal Gear	APPROXIMATE FLOW RANGE		DISCHARGE HEAD	
▲ ALLHEAT	*	*	*	*	*	*	*	*	*	Cast Iron Internal Gear	(USGPM)	(GPM)	(FEET)	(METERS)
											to 2900	to 600	300	90
											to 6500	to 1470	330	100

- ▶ Higher flows available by combining two or three pumps on a single drive shaft. Multistage pumps available for handling a broad range of fluid viscosities.
- ▲ For pumping thermal oil at temperatures to 662°F (350°C) or hot water at temperatures up to 405°F (207°C).



Vertical, Magnetic Drive 3D-250 pump on chemical service - Freeport, Texas, USA

# Rotary and Centrifugal Pumps

The reliable pump people